



# PRODUCT GUIDE

NEW  
CONSTRUCTION



RESTORATION



SPECIALTY  
PRODUCTS

PAINT STRIPPING

# NEW CONSTRUCTION



## NMD 80

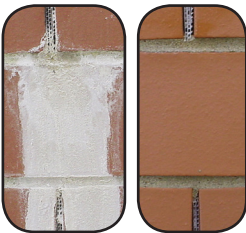
NMD 80 is a safe, effective and profitable way to clean new masonry. NMD 80 is a powerful detergent-based solution designed to remove both efflorescence and mortar smears from masonry surfaces. It can be used on most masonry substrates including brick, stone, synthetic stone, precast, designer and colored, burnished and split-faced block. This product is capable of cleaning without brushing or scrubbing and will leave the cream on the mortar joints. Implementing the use of the “EaCo Chem Process” is imperative to experience all the benefits possible while creating reductions in chemical costs and cleaning time. Combine these cost reductions with heightened safety, cost effective, excellent final appearance, and you have tomorrow’s chemistry today.



## SOS 50

SOS 50 is a buffered detergent based solution designed for the cleaning of new masonry structures. The HCl has been replaced, making this product the “NMD 80 alternative” product when needed. SOS 50 can be used on virtually any type of brick, block, stone or pre-cast. SOS 50 has the same advantages as NMD 80 and the application method is the same. There is still no brushing or scrubbing with SOS 50.

# COMPLETE CURE



## CALCITE PRESOAK

This product is designed as a presoak softener to facilitate removal of heavy calcite deposits on clay brick. It must be followed with an application of **NMD 80** to ensure uniformity of appearance. In cases where color sensitive substrates or mortars are being used, EF-Fortless should be used instead of **NMD 80** as the second step.



## EF-FORTLESS

**EF-Fortless** is a soap solution that melts powdery efflorescence and haze, and helps to control its return. This product is mildly acidic and great for use on color sensitive surfaces since it will not discolor most brick, block, or mortar. Can be used on block and similar substrates. For vertical cleaning simply apply and wait for foam to collapse. Reapply as needed. The amount of coverage will vary with the thickness of the efflorescence. Surface can be sealed once completely dry. When cleaning horizontal surfaces apply straight to the surface or stain. Allow the chemical to foam; once the foaming has stopped you will then have to rinse the chemical off the substrate with low pressure. Depending on the severity of the stain several repeat applications may be required.



## WHITE SCUM PRESOAK

This product is designed as a presoak to facilitate removal of white scum and secondary hydration deposits of calcium hydroxide on block, brick, or concrete. **White Scum Presoak** can also remove calcite deposits from concrete masonry units (CMU). **White Scum Presoak** must be followed with an application of **NMD80** to ensure complete removal of white scum. **White Scum Presoak** provides powerful penetration and softening action of white scum.

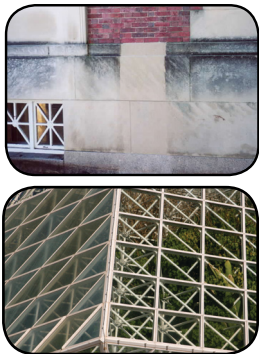


# RESTORATION



## HERITAGE RESTORER

**Heritage Restorer** is a restoration detergent for historical or sensitive substrates. The product is based on our thoroughly developed non-corrosive technology. Cleaning power is achieved by a combination of over 24% surfactants, mild acids to melt metal and mineral oxide residue and water based solvents for hydrocarbon based residues. Great for Brick, limestone, sandstone, concrete, precast, exposed aggregate, granite, unpolished marble, synthetic stone and terrazzo. Always test product in a small area before beginning project.



## ONERESTORE®

**OneRestore®** is a breakthrough product that provides remarkable versatility, cleaning power and safety all in one. Capable of removing the deepest stains from limestone and brick, it is also used to safely restore glass and anodized aluminum. This product can remove virtually any metal or mineral oxide stain, including copper stains, and can be an effective coating remover. Safe on most surfaces, and around people, **OneRestore®** is a great choice for cleaning and restoring colleges, schools, hospitals, government facilities and offices. With a “spray on/spray off” application process, **OneRestore®** will save hours of cleaning time versus the traditional bucket and brush process.



## GS RESTORATION

**GSR** is a very effective ammonium bi-flouride restoration detergent. Originally designed for glazed brick and terra cotta cleaning, it is also an excellent concrete cleaner. **GSR** offers the strength of Hydrofluoric Acid (HF) but with a higher degree of safety, and the ability to work without covering glass when used as directed. Do not allow product to dry on surface. **GSR's** acid blend is often more effective than HF at removing the black mineral stains that occur on glazed surfaces with almost no chance of burning. This is our most economical restoration detergent.

# SPECIALTY PRODUCTS



## A.R.T. (ANODIZED RESTORATION TREATMENT)

**A.R.T.'s** unique chemistry is a solvent-based resin system designed for treating the surface of anodized aluminum to renew the satin lustre that has been damaged over time. **A.R.T.** will stay on the surface for extended periods without cracking, lifting or peeling and is easily removed for re-treatment. Wipe on application. Product ships nonhazardous and nonflammable. **A.R.T.** is available in pints and gallons.

## SPECIALTY PRODUCTS (CONT.)



### C-TAR MELT

**C-Tar Melt** is a blend of water-rinseable, non hazardous ingredients that give exceptionally powerful penetration and softening action. This product is not dilutable with water. In fact, its activity will be stopped by the application of water. It is biodegradable and will aid in the separation of tar residue from the rinse water if you contain and store the runoff for a short period of time. **C-Tar Melt** will not harm skin but will dry it out if constantly exposed to this product. **C-Tar Melt** is safe for wood, metal and masonry surfaces and will not raise the grain or cause discoloration of these surfaces.



### CLEANSOL BC

**Cleansol BC** may be the most versatile, safe cleaner for professional contract cleaners. Sold to homeowners as **Cleansol**, which ships as noncorrosive, it can handle virtually every job around the house without scrubbing, including wood, sidings, decks, gutters, concrete and awnings. Vehicles and equipment achieve a polished, wax-like look when cleaned with **Cleansol BC**. Industrial cleaning pros will find this product exceptional at brushlessly removing oxidized paint from metal siding and for cleaning vinyl awnings and black streaks from EIFS. This is an extraordinary super-concentrate that really produces profits without adding liability.



### HD BRITENOL

**HD Britenol** is an all purpose mild acid cleaner designed for residential and light duty commercial applications. **HD Britenol** works great on wood, aluminum, vinyl, concrete, terra cotta, shingles, glass, brick, block or stone. It will remove almost any stain that **Cleansol BC** does not (like under eaves on siding). **HD Britenol** will not harm people or animals, but care should be taken to protect plants. **HD Britenol** is sold as a concentrate for pros and **Britenol** for homeowners. Neither is shipped hazardous.



### HD DEGREASER

This heavy duty degreaser is great for the shop! **HD Degreaser** has excellent adhesion and cleaning ability on vertical and horizontal surfaces. This product will penetrate layers with a combination of aggressive caustics, buffering and stabilizing compounds that keeps it from drying out. This allows a fast and long term attack with minimal degradation of surfaces. **HD Degreaser** can be used for pre-treating oil stains on concrete and for soaking through very thick layers of clay, grease, foodstuffs, hydraulic fluid and oil stains in one application. **HD** is easy to work with and can dwell on the surface much longer than butyl cleaners. (Note: Degreaser may mark paint or discolor aluminum.)



### HOT STAIN REMOVER

**Hot Stain Remover** is a high pH alkaline cleaning product that will remove both food and petroleum oil staining and remove heavy carbon deposits and oil from metal, wood or masonry.



### POLISHED STONE CLEANER (NEUTRAL)

This unique chemistry is a neutral cleaner with many advantages for interior cleaning including tile, limestone, and granite and works well in showers. It has a very mild odor and is non-corrosive. Non-hazardous components make it safe for both the user and the environment. **Polished Stone Cleaner** is capable of removing smoke, heavy finger soils, wax and polishes and foot traffic soil without any harm to the substrate. Another benefit is that it does not foam on pick up so if you must vacuum the residue, you will not waste time clearing foam or de-foaming. All these characteristics make the soap readily disposable to sanitary sewers or easily treated in waste reclaim systems.



### SMOKE MELT

This is a highly alkaline cleaning product that will remove heavy soil deposits from metal, wood or masonry at high dilutions. Great care must be taken when applying this product because of its highly active penetrating nature. **Smoke Melt** will strip latex and enamel paints in a short time. **Smoke Melt** is good at softening the heavy black smoke on masonry that occurs as a result of fire damage.



# PAINT STRIPPERS/COATING REMOVERS



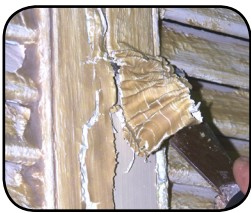
## ACRYLISTRIP

A solvent-based sealer, stain, coating and paint stripper with a wide range of applications. **AcryliStrip** ships nonhazardous and will not burn your skin. It is virtually instantaneous in penetrating most acrylics and elastomerics. **AcryliStrip** will remove multiple layers of acrylics, deck sealers, polymer coatings, latexes, acrylic latexes, alkyds, enamels, oil-based stains, polyurethanes and other resin coatings. It is not classified as flammable, and will replace methylene chloride in many applications. When used properly, it will not harm aluminum, wood, masonry or siding.



## GRAF-EX

**Graf-Ex** is a special purpose stripper designed to be used in those environments where safety, low odor, and performance are of equal importance such as schools and building interiors. Easy and pleasant to use, it ships non-corrosive and strips a wide variety of materials. **Graf-Ex** is an outstanding performer in the removal of inks and paints from painted surfaces. This is accomplished with a biodegradable product that is caustic free and will not harm most substrates. It will not raise the grain of wood, cause flash rusting in metal or damage masonry surfaces. A water rinse can be used to stop its activity.



## INSTRIP

This product has a real combination of safety benefits and our traditional broad array of uses. **InStrip** is a paste that stays where it is put. This non-corrosive product is great for everyone from homeowners to restoration professionals. Safe on all types of wood, metal, and masonry substrates, this stripper will do everything from lacquer and varnish to catalyzed urethanes on truck bodies. Simple soap and water cleanup does not require a pressure washer.



## LCS

**LCS** is a water-based stripper that contains d-limonene and caustic. It can be used for a wide range of applications, such as removing sealer, stain, and limited layer paint on decks, masonry, and concrete surfaces. **LCS** can be used to remove some latexes, enamels, resin coatings, mineral pigment and oil based stains. Because this is a caustic product, test before using the product to ensure safety of the surface. Another benefit is its quick penetration on already wet surfaces for removal of graffiti shadows and deck stripping jobs.



## STRIPPER CREAM

**Stripper Cream** is a thickened multilayer paint remover with excellent consistency that can be sprayed or rolled on with equal ease. This alkaline product when applied to paint is very slow to dry out and can remain on the surface for days. **Stripper Cream** makes an excellent graffiti remover for porous masonry surfaces. It also removes black crust from limestone and brick. **Stripper Cream** will take off the black crust from sandstone/limestone, caps, sills and foundation.



## STRIPSOL LO (LOW ODOR)

**Stripsol LO** is a non-hazardous, solvent based stripper designed to remove paint and adhesives from multiple surfaces. This product's low odor ability allows it to be used both indoors and outdoors. **Stripsol LO** penetrates quickly for effective removal of paint and adhesives. **Stripsol LO** is very effective at removing acrylics, graffiti and some stains from decks.

# EQUIPMENT MAINTENANCE



## CT WASH

**CT Wash** is designed to remove light to medium build-up of excess concrete from concrete mixer trucks and construction equipment. **CT Wash** is great for maintaining concrete trucks or equipment and is highly dilutable when regular maintenance is performed. For heavy build-up removal, It can be applied multiple times, then rinsed to soften excess concrete. **CT Wash** breaks the bond between the softened concrete and the surface. The product may require extended dwell times depending on the severity of the build-up.



BEFORE

## PLUS

**PLUS** is a degreaser for use with a pressure washer. It removes thick grease from heavy equipment and rolling stock. The **PLUS** product is designed to enable the user to remove soils from paint without brushing or resorting to high pressure application. The solution works better with a cold water rinse, however hot water can be used. With a thorough rinse, **PLUS** leaves no film or water spots on glass.



AFTER

# APPLICATION SYSTEMS



## EC JET & EC JET FOR PAVERS

The **EC Jet** is a quick coupling attachment to the end of your pressure washer wand. It is designed to dilute material 4 parts water to 1 part chemical. It is primarily used with the application of **NMD 80** or **SOS 50** for new construction cleaning. The **EC Jet** allows for quick and accurate dilutions while spraying the chemical with the best nozzle. The open/close valve can also be used to shut off the chemical flow and allow rinsing without removing the unit. For best results, a 3 to 5 gpm pressure washer is recommended.





## PRIOR TO USE

It is always recommended to pre-test each product for each application. There can be any variables from job to job, that even what may have worked in the past could change slightly. For new construction, a mock up panel is always best to clean prior to full scale cleaning. This will give everyone the opportunity to see the end results before the project begins. For other projects, such as restoration, paint stripping or house wash, pre-test on an inconspicuous area, such as a back wall or behind some foliage.

Testing will determine length of dwell time, number of applications and effectiveness of material. Always read product data and SDS prior to using any chemical. Always allow the surface to dry completely before evaluating final results. Protect surrounding surfaces according to directions. Never mix chemicals with each other or add other ingredients to any EaCo Chem product unless specifically instructed.

Each product has different application instructions, dilutions and dwell times. We call ourselves "The No Brush Zone," because most EaCo Chem products are designed to be sprayed on and rinsed off. Some products, such as the thicker paint strippers, will need to be brushed or rolled on. Consult product data sheets for specific application instructions.

For further information or assistance, please contact an EaCo Chem representative @ (724) 656-1055.

**FOR PROFESSIONAL USE ONLY.** Always follow OSHA safety requirements in every situation. Read the SDS & Product Data sheets on all material prior to use for safety information.

**In Case of a Spill:** Follow all handling instructions found on the product data sheet. Follow all local, state and federal regulations for waste disposal of material. In the case of an emergency, contact ChemTel @ (800) 255-3924 for assistance.



**The  
Finest  
Finishing Tools**

**For New Construction, Restoration,  
Hardscape & Pavers.**



## **Product Guide**

### **EaCo Chem, Inc.**

**765 Commerce Avenue • New Castle, PA • 16101**

**(724) 656-1055 • Fax (724) 656-0757**

**[www.EaCoChem.com](http://www.EaCoChem.com) • [Info@EaCoChem.com](mailto:Info@EaCoChem.com)**